

FUSIBLE SHUNT TRIP

ASSEMBLED USING EATON CUTLER HAMMER PRODUCTS



A shunt trip disconnect designed as a simple economical solution that complies with code requirements

STANDARD FEATURES & BENEFITS:

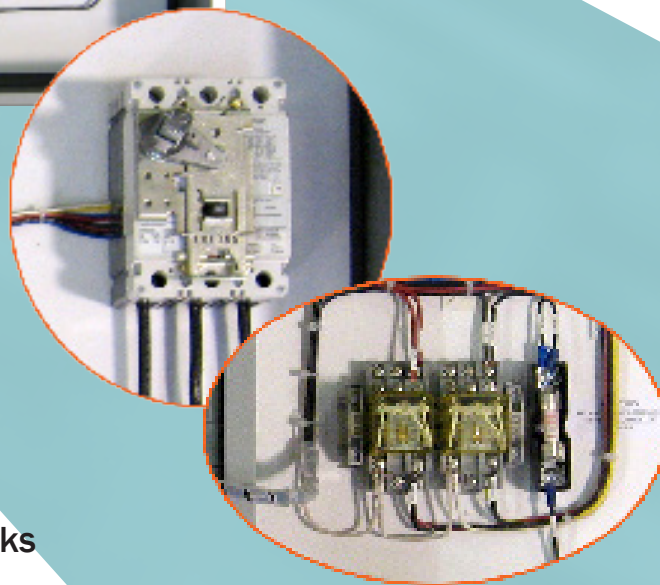
- 3 Phase Fused Power Switch
- Shunt Trip 120V
- Ground Lug Per NEC
- Key to Test Switch - 120V with legend plate
- Fire Safety Interface Relay
- Fire Alarm Voltage Monitoring Relay
- Control Power Transformer with fuses and blocks
- Mechanically Interlocked Auxiliary Contacts
- Pilot Light - 120V Clear LED *(color options available)
- Padlockable Handle for service work safety

OPTIONAL FEATURES:

- Nema 3, 4, 12 & 4X enclosures
- Pilot Lights available in red or green
- Isolated Neutral Lug, 100 or 200 Amp
- Available for Low E or low voltage trip applications

TYPICAL APPLICATIONS:

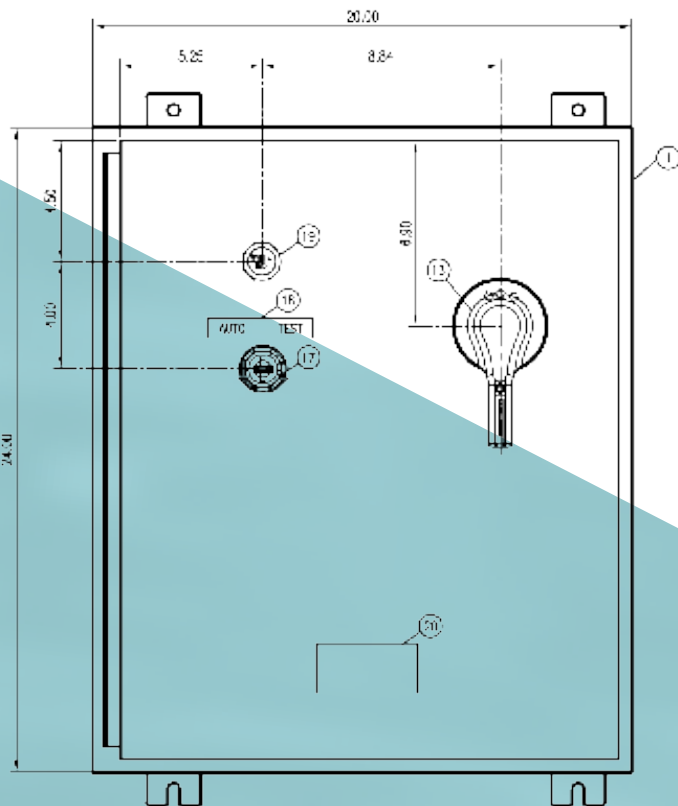
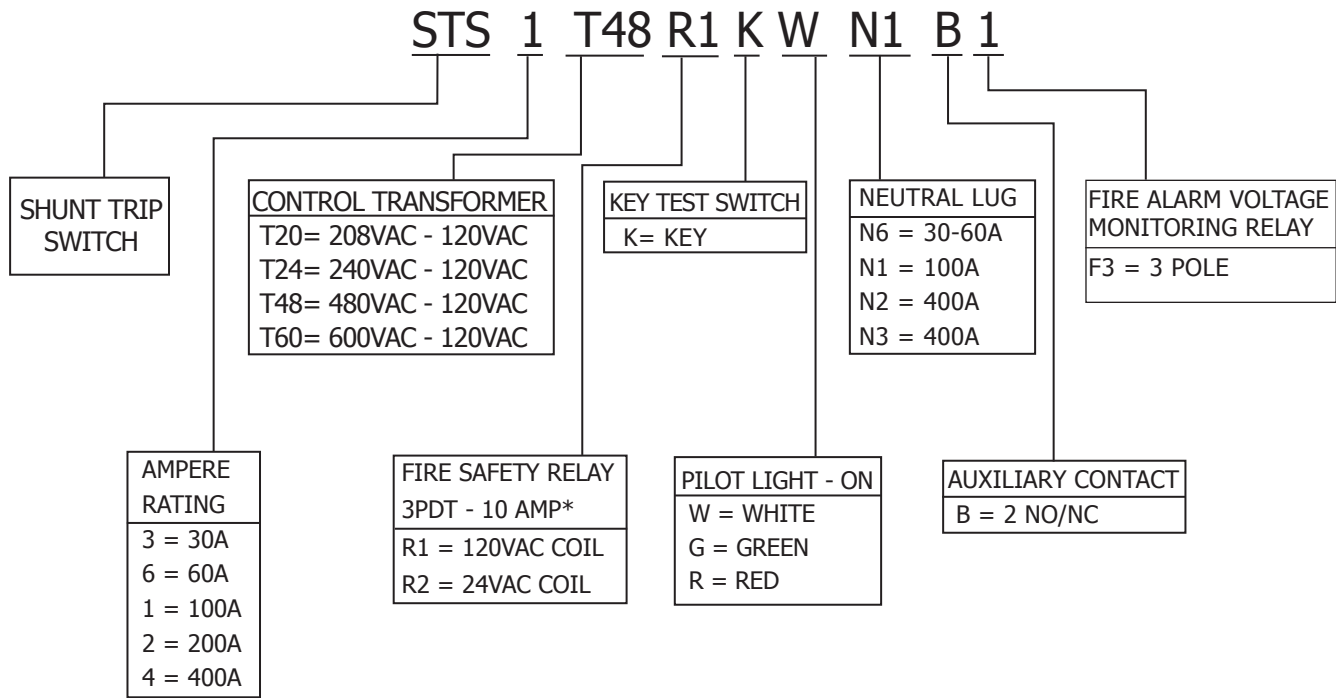
- Elevator Disconnects
- Building Emergency Systems
- Computer Room Shunt Trip Disconnect



FUSECO Inc. • 10553 Olympic Dr. Suite 101 Dallas, TX 75220
Phone: 214.357.6676 • Fax: 214.357.5201 • Toll Free: 800.234.3873
www.fusecoinc.com

FUSIBLE SHUNT TRIP

ASSEMBLED USING EATON CUTLER HAMMER PRODUCTS



RATINGS:

VOLTS: 600AC

AMPS: 30A, 60A, 100A and 200A

APPROVALS:

- UL 98 Enclosed Molded Case Switch
- UL 50 Enclosure
- UL/cUL Listed Control Panel

RECOMMENDED FUSE USAGE

ES Series.....use with AJT, A4J, HSJ



FUSECO Inc. • 10553 Olympic Dr. Suite 101 Dallas, TX 75220
 Phone: 214.357.6676 • Fax:214.357.5201 • Toll Free: 800.234.3873
www.fusecoinc.com

FUSIBLE SHUNT TRIP

NEMA 1 - 30, 60 AND 100 AMP MOLDED CASE SWITCH		
QTY	PART	DESCRIPTION
1	SCE -24N2006LP	ENCLOSURE
1	SCE -24N20MP	MOUNTING PAN
12	V7-W4	TERMINAL BLOCKS
2	V7-EA35	END ANCHOR
1	V7-FB3	END BARRIER
2	SR3B-05	SOCKET
2	RR3B-UAC120V	RELAY
1	C0100E2AFB	100 VA TRANSFORMER W/FUSEBLOCK
1	FD3225KLB10S22	MC SWITCH - SHUNT, SWITCH & AUX CONTACT
1	HM1R06	BREAKER HANDLE
1	60603J	FUSE BLOCK
2	ATOR1	FUSES
1	TRM 1 - 1/4	FUSES
1	D7M-KM2-2PX10	2 POSITION KEYED SWITCH
1	D7-35BE100	ENGRAVED NAMEPLATE
1	D7P3N5	CLEAR PILOT LIGHT 120V LED
1	D7-35BE100	ENGRAVED NAMEPLATE
1	UL CERTIFICATION	UL CERTIFICATION
	WIRING & ASSEMBLY	INCLUDED

100 AMP NEUTRAL	
(N) 100ALUG	LUG W/INSULATOR

NEMA 3R ENCLOSURE	
SCE-24R2006LP	ENCLOSURE & SUB PANEL
SCE-24P20	



Component	Bussman	Ferraz Shawmut	Nema7
Base 30A enclosed fusible shunt trip switch	PS3	ES3	STS3
Base 60A enclosed fusible shunt trip switch	PS6	ES6	STS6
Base 100A enclosed fusible shunt trip switch	PS1	ES1	STS1
Base 200A enclosed fusible shunt trip switch	PS2	ES2	STS2
208VAC to 120VAC control transformer	T20	T20	T20
240VAC to 120VAC control transformer	T24	T24	T24
480VAC to 120VAC control transformer	T48	T48	T48
600VAC to 120VAC control transformer	T60	T60	T60
120VAC coil fire safety relay DPDT (with voltage monitoring)1	R1	R1	R1
24VDC coil fire safety relay DPDT (with voltage monitoring)1	R2	R2	R2
Keyswitch	K	K	K
Red pilot light	R	R	R
Green pilot light	G	G	G
White pilot light	W	W	W
30-60A neutral lug	N6	N6	N6
100A neutral lug	N1	N1	N1
200A neutral lug	N2	N2	N2
400A neutral lug	N4	N4	N3
2 auxiliary contacts	B	B 2	B
Fire alarm voltage monitoring relay2	F1	Included	F3
NEMA 12 enclosure	Z	2	1
NEMA 3R enclosure	U	3	3
NEMA 4 enclosure	Y	4	1
NEMA 4X enclosure	N/a	X	1X



FUSECO Inc. • 10553 Olympic Dr. Suite 101 Dallas, TX 75220
 Phone: 214.357.6676 • Fax: 214.357.5201 • Toll Free: 800.234.3873
 www.fusecoinc.com

FUSIBLE SHUNT TRIP

NEMA 1 - 200 AMP MOLDED CASE SWITCH		
QTY	PART	DESCRIPTION
1	SCE -24N2006LP	ENCLOSURE
1	SCE -24N20MP	MOUNTING PAN
12	V7-W4	TERMINAL BLOCKS
2	V7-EA35	END ANCHOR
1	V7-EB3	END BARRIER
2	SR3B-05	SOCKET
2	RR3B-UAC120V	RELAY
1	C0100E2AFB	100 VA TRANSFORMER W/FUSEBLOCK
1	FD3225KLB10S22	MC SWITCH - SHUNT. SWITCH & AUX CONTACT
1	HM1R06	BREAKER HANDLE
1	60603J	FUSE BLOCK
2	ATOR1	FUSES
1	TRM 1 - 1/4	FUSES
1	D7M-KM2-2PX10	2 POSITION KEYED SWITCH
1	D7-35BE100	ENGRAVED NAMEPLATE
1	D7P3N5	CLEAR PILOT LIGHT 120V LED
1	D7-35BE100	ENGRAVED NAMEPLATE
1	UL CERTIFICATION	UL CERTIFICATION
	WIRING & ASSEMBLY	INCLUDED

200 AMP NEUTRAL	
(N) 200ALUG	LUG W/INSULATOR

NEMA 3R ENCLOSURE	
SCE-24R2006LP	ENCLOSURE & SUB PANEL
SCE-24P20	



Component	Bussman	Ferraz Shawmut	Nema7
Base 30A enclosed fusible shunt trip switch	PS3	ES3	STS3
Base 60A enclosed fusible shunt trip switch	PS6	ES6	STS6
Base 100A enclosed fusible shunt trip switch	PS1	ES1	STS1
Base 200A enclosed fusible shunt trip switch	PS2	ES2	STS2
208VAC to 120VAC control transformer	T20	T20	T20
240VAC to 120VAC control transformer	T24	T24	T24
480VAC to 120VAC control transformer	T48	T48	T48
600VAC to 120VAC control transformer	T60	T60	T60
120VAC coil fire safety relay DPDT (with voltage monitoring)1	R1	R1	R1
24VDC coil fire safety relay DPDT (with voltage monitoring)1	R2	R2	R2
Keyswitch	K	K	K
Red pilot light	R	R	R
Green pilot light	G	G	G
White pilot light	W	W	W
30-60A neutral lug	N6	N6	N6
100A neutral lug	N1	N1	N1
200A neutral lug	N2	N2	N2
400A neutral lug	N4	N4	N3
2 auxiliary contacts	B	B 2	B
Fire alarm voltage monitoring relay2	F1	Included	F3
NEMA 12 enclosure	Z	2	1
NEMA 3R enclosure	U	3	3
NEMA 4 enclosure	Y	4	1
NEMA 4X enclosure	N/a	X	1X



FUSECO Inc. • 10553 Olympic Dr. Suite 101 Dallas, TX 75220
 Phone: 214.357.6676 • Fax:214.357.5201 • Toll Free: 800.234.3873
 www.fusecoinc.com